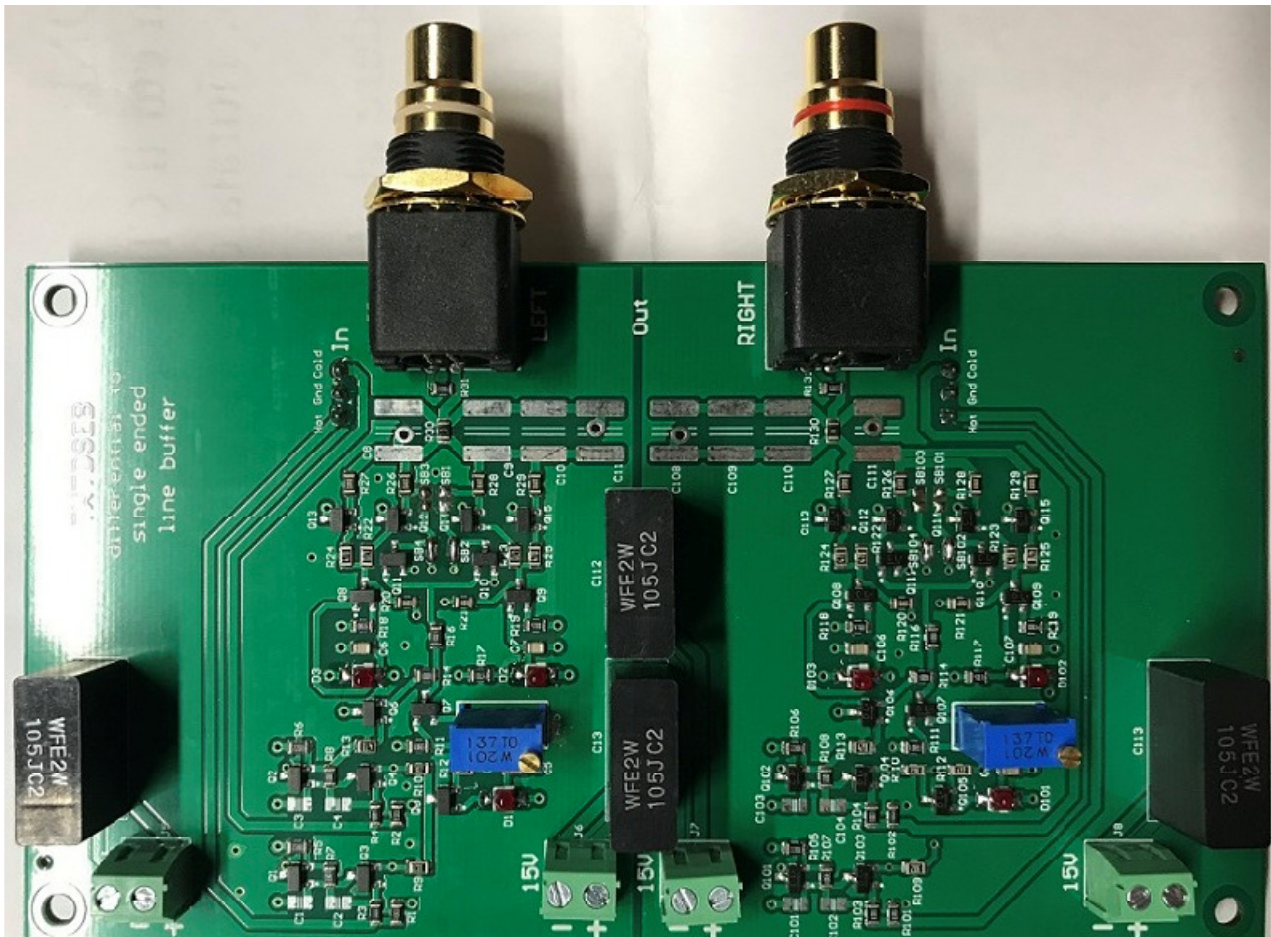


TWTDSEB Differential to single ended line buffer



Solid state differential to single ended line buffer suitable to be used as impedance adapter and balanced to single ended converter for voltage output balanced DAC. Designed to be stacked directly onto the TWSDAC-DSD discrete DAC.

Features:

Buffer type: differential to single ended

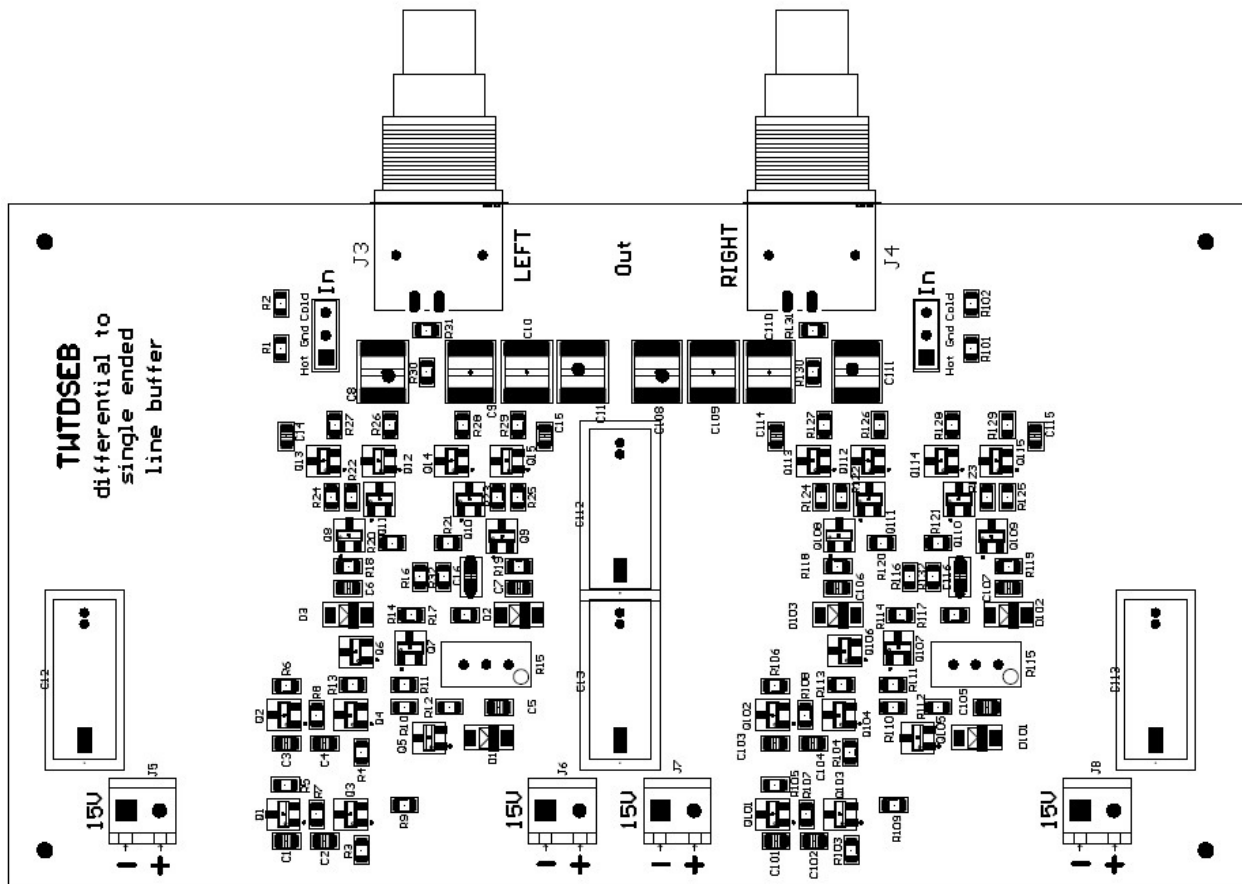
Output: as input

Board size: 140mm x 77mm (excluding RCA connectors)

Power supply: +/- 15VDC/160 mA

Board options: finished board only

PCB layout



Connectors

J5, J6, J7, J8: 15 VDC/25 mA regulated power supply. Be careful with power supply polarities.

J2: Input Right channel

J1: Input Left channel

J4: Output Right channel

J3: Output Left channel

There is 1 available option for this board:

- finished boards (fully assembled without RCA connectors)

Suitable RCA connectors can be sourced from Hifi Collective, part number is LCHQRCA.

Two output options are available:

1. DC coupled. As supplied.
2. AC coupled. Remove R30-R130, install C8-C9-C10-C11-C108-C109-C110-C111 (suitable part is the Rubycon 16MU226MD35750 Mouser part 232-16MU226MD35750, or the cheaper CDE 107BPA016M Mouser part 598-107BPA016M)

Settings

Offset settings: turn R15 and R115 to get 0V at Left and Right outputs (connect a DMM to J3 and J4).

Caution

The board has a little DC offset drift. If your preamp/amp is DC coupled, AC coupled option is strongly recommended.