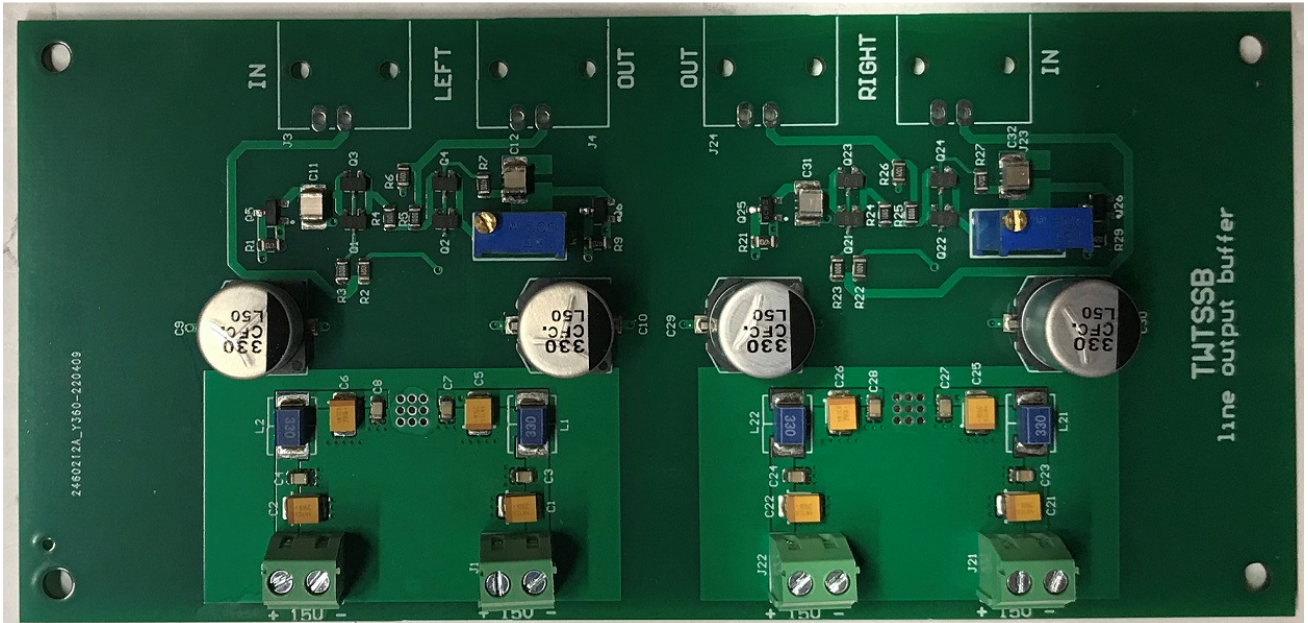


TWTSSB Solid state line buffer



Solid state line buffer suitable to be used as impedance adapter for voltage output DAC. Designed to be stacked directly onto the TWSDAC-LT discrete DAC.

Features:

Buffer type: single ended jfet with CCS

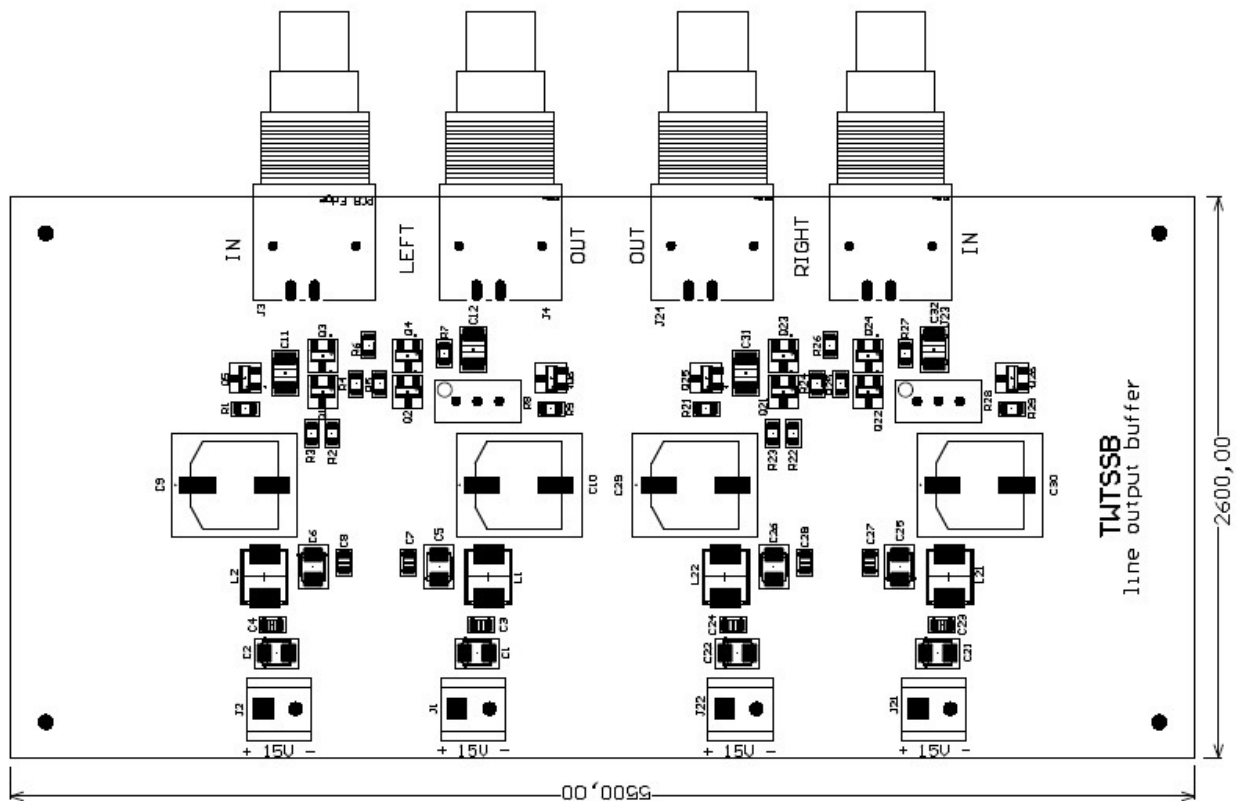
Output: as input

Board size: 140mm x 66mm (excluding RCA connectors)

Power supply: +/- 15VDC/40 mA

Board options: finished board only

PCB layout



Connectors

J1, J2, J21, J22: 15 VDC/20 mA regulated power supply. Be careful with power supply polarities.

J23: Input Right channel

J3: Input Left channel

J24: Output Right channel

J4: Output Left channel

Offset settings: turn R8 and R28 to get 0V at Left and Right outputs (connect a DMM to J24 and J4).

There is 1 available option for this board:

- finished boards (fully assembled without RCA connectors)

Suitable RCA connectors can be sourced from Hifi Collective, part number is LCHQRCA.